

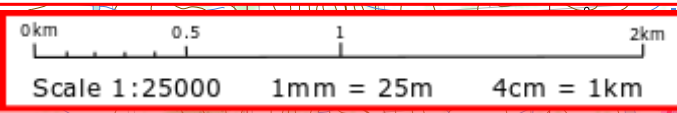
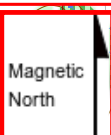
2020 KOVID-Forest Night/Day/Cycle-gaine

15-16 August 2020

Emergency phone: 0401 994 975

Night event: 6-11pm

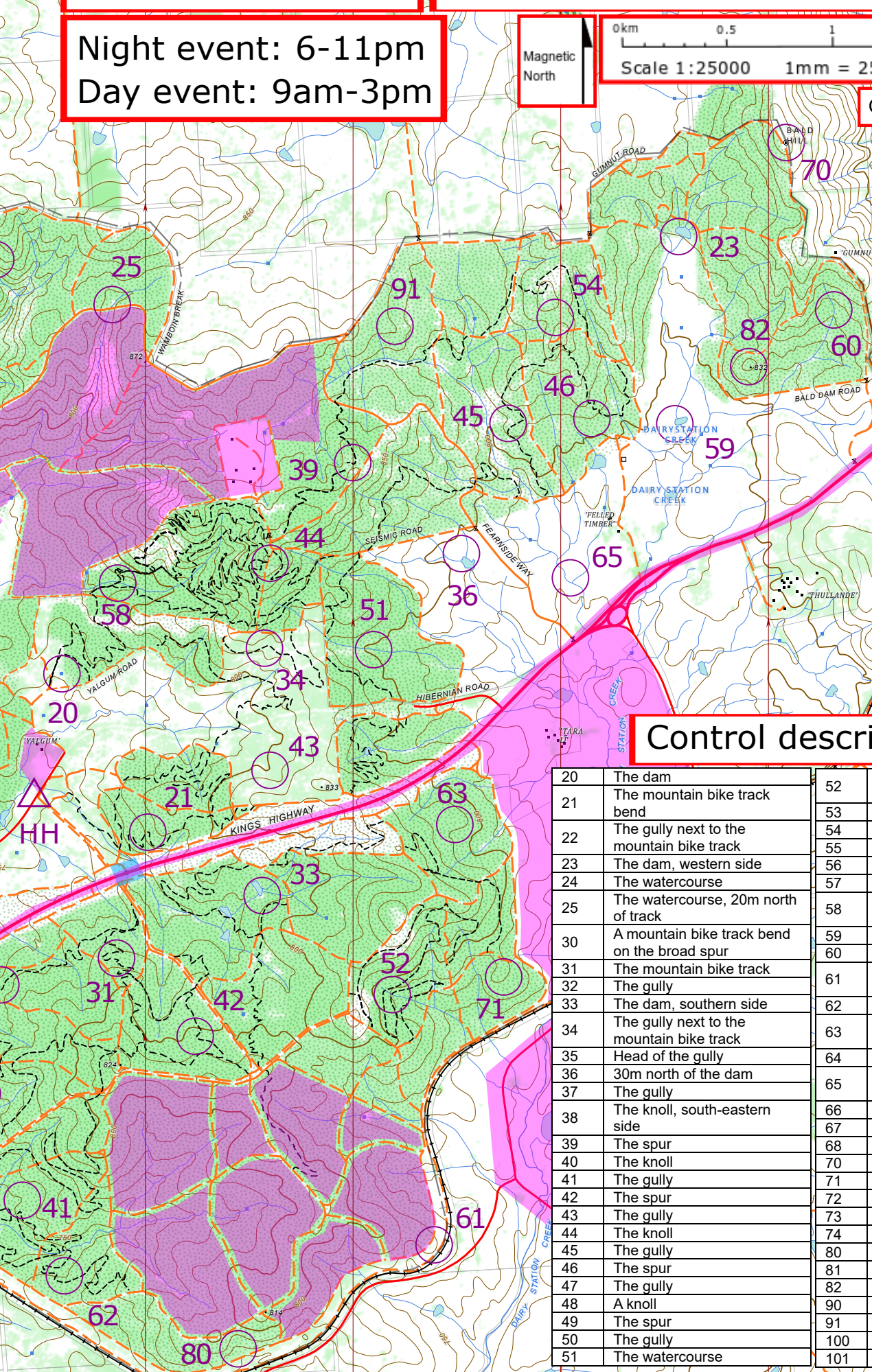
Day event: 9am-3pm



Contour Interval 5m

KEY

- Magnetic North (grid lines on map are aligned to magnetic north)
- Contours
- Intermittent stream - with dam
- Perennial stream
- Stock dam
- Sealed road
- Unsealed road
- Firetrail
- Out of bounds
- Highway crossing
- Individual buildings
- Railway line
- ACT/NSW border
- Open ground - usually grass
- Trees



Control descriptions

20	The dam	52	The gully and mountain bike track crossing
21	The mountain bike track bend	53	The dam, southern side
22	The gully next to the mountain bike track	54	The saddle
23	The dam, western side	55	The spur
24	The watercourse	56	The watercourse
25	The watercourse, 20m north of track	57	The watercourse
30	A mountain bike track bend on the broad spur	58	The watercourse and mountain bike track crossing
31	The mountain bike track	59	The dam, western side
32	The gully	60	The watercourse
33	The dam, southern side	61	The spur, southeast side of track
34	The gully next to the mountain bike track	62	The gully
35	Head of the gully	63	The spur, 20m west of rocky ground
36	30m north of the dam	64	The dam, eastern side
37	The gully	65	10m north of the watercourse junction
38	The knoll, south-eastern side	66	The watercourse
39	The spur	67	The watercourse
40	The knoll	68	The gully
41	The gully	70	Bald Hill
42	The spur	71	The knoll
43	The gully	72	The dam, western side
44	The knoll	73	The gully
45	The gully	74	A large tree in the gully
46	The spur	80	The gully
47	The gully	81	The spur
48	A knoll	82	The knoll
49	The spur	90	The watercourse
50	The gully	91	A large tree on the spur
51	The watercourse	100	The knoll, Mt Cohen
		101	The dam

Coordinator: Stephen Goggs
Setters: Jonathan Fearn
Ciaran Lane
Vetter: Dane Roberts
General helpers:
Keira Banks (map)
David Baldwin
Gail Sutton
First Aid: Kelvin Peh



ACT
Rogaining
Association
INCORPORATED

<http://act.rogaining.org.au>

Source: © Land and Property Information
NSW Department of Finance and Services
Panorama Avenue, Bathurst 2795
www.lpi.nsw.gov.au

202

15-1

Nigh
Day

